

BDP

Oil recovery unit

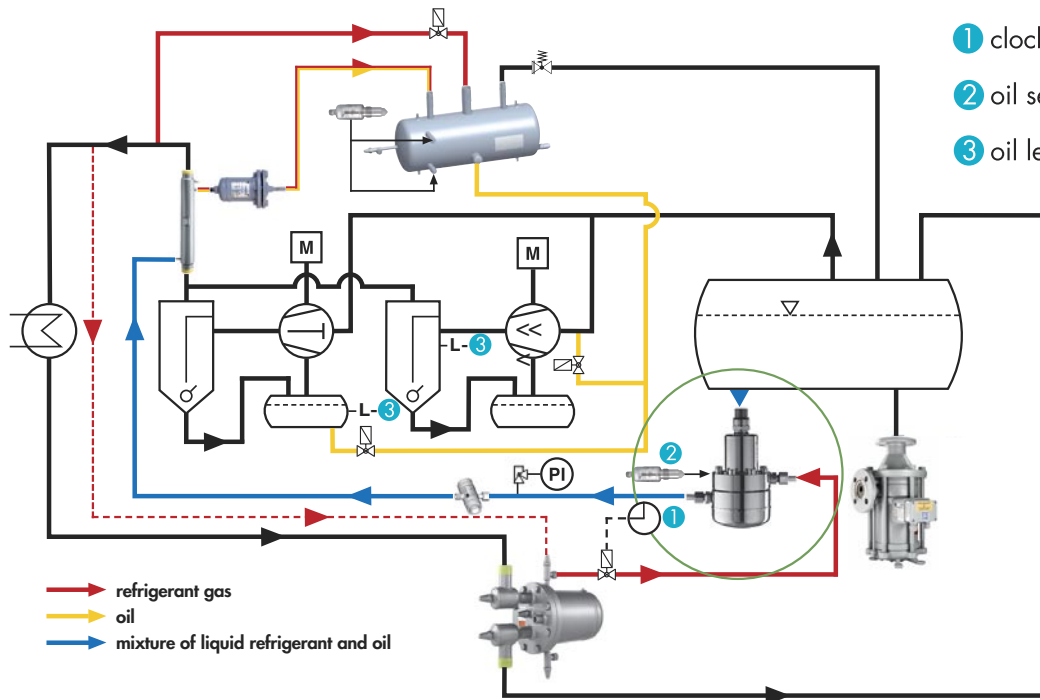


BDP

Oil recovery unit

Intended use

Refrigerant/oil is collected in the BDP and defined quantity of oil. Respective refrigerant/oil is pushed from the low pressure side by means of hotgas to the high pressure side of the compressor, evaporating any remaining liquid refrigerant in a heat exchanger before entering.



Control

- ① clock timer
- ② oil sensor switch (BDP)
- ③ oil level control (oil separator)

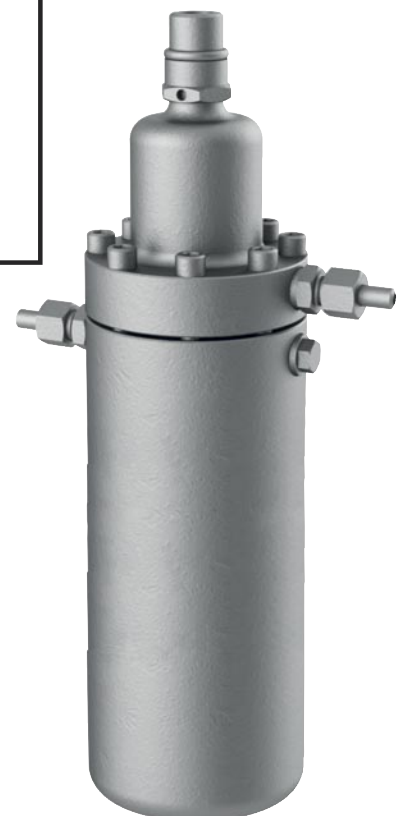
Advantages

Cost effectiveness

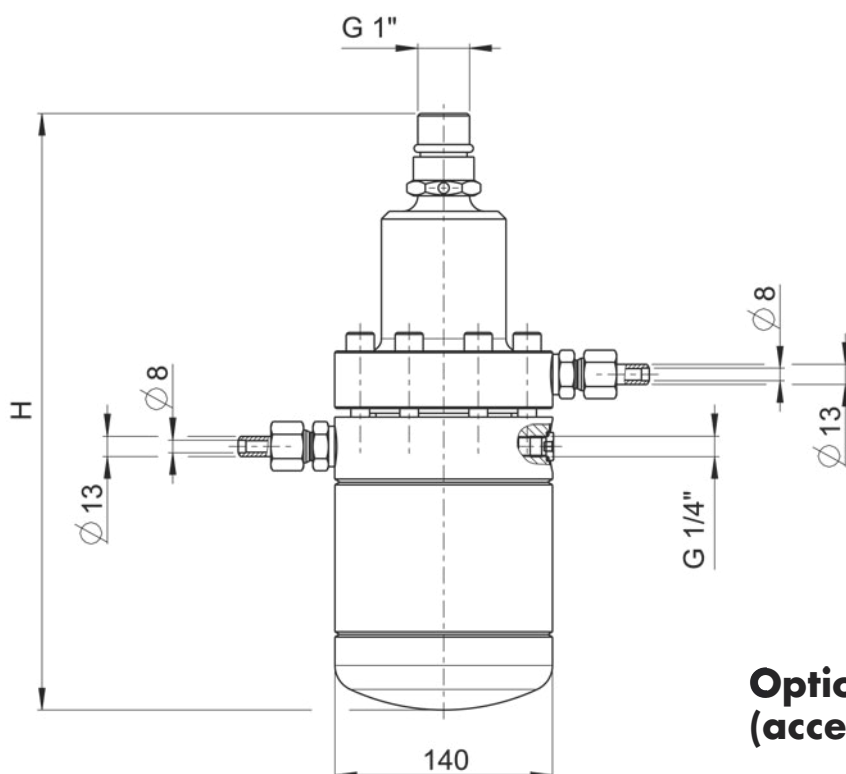
Expensive compressor oil is re-used and returned into the cycle instead of disposing it costly. Frequent oil draining will keep the surface of heat exchangers free of oil and as such increase efficiency of heat transfer and overall system efficiency.

Easy handling

Our standardized solution is an improvement of the long used BDP and has considered everything: the housing can be opened (should this be ever necessary) and the design pressure of 40 bar enables a broad range of applications. Several control options can be realized.



	diameter	hight	volume	connection	PN _{max}	material	approved refrigerants
	(mm)	(mm)	(l)	(DN)	(bar)		
BDP2-03	140	286	0,3	G1"	40	stainless steel	all
BDP2-14	140	384	1,4	G1"	40	stainless steel	all
BDP2-38	140	562	3,8	G1"	40	stainless steel	all

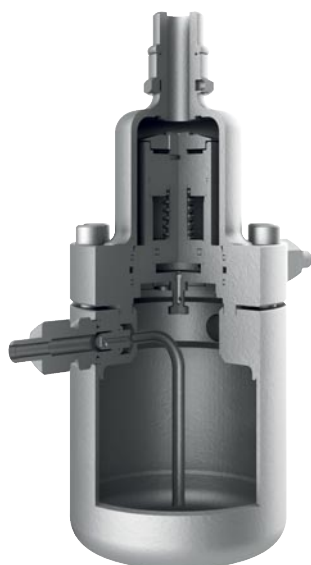


Standard scope of delivery

- **Threaded connection G1"**
for refrigerant/oil supply
- **connection with internal thread 1/2"**
for connection of an oil sensor
- **Weld connection Ø 13**
for hotgas
- **Connection Ø 13**
for refrigerant/oil discharge
with integrated check valve for
a differential pressure of 3 bar

Optional scope of supply (accessories)

- **Stop valve EA32/G1"– I resp. II (steel)**
or **EA40/G1"– I resp. II (SS)**
- **threaded cam G1" (steel)**
or **G1" VAI (SS)**
(for connection of other valve brands)
- **Check valve for a differential pressure of 1 bar**
(for replacement of the standard check valve 3 bar)
- **Adapter with gas equalization line (SS, 1.4541)**
(i.e. for connecting to standpipes)
- **WITT regulating valve EE3 or EE6**
- **WITT flow heat exchanger DWR**
- **WITT oil fine filter ÖF-G1/4"**
- **level switch**
- **flow sight glass (SS)**





TH. WITT Kältemaschinenfabrik GmbH

Lukasstraße 32

52070 Aachen, Germany

+49 241 18208-0 | sales@th-witt.com