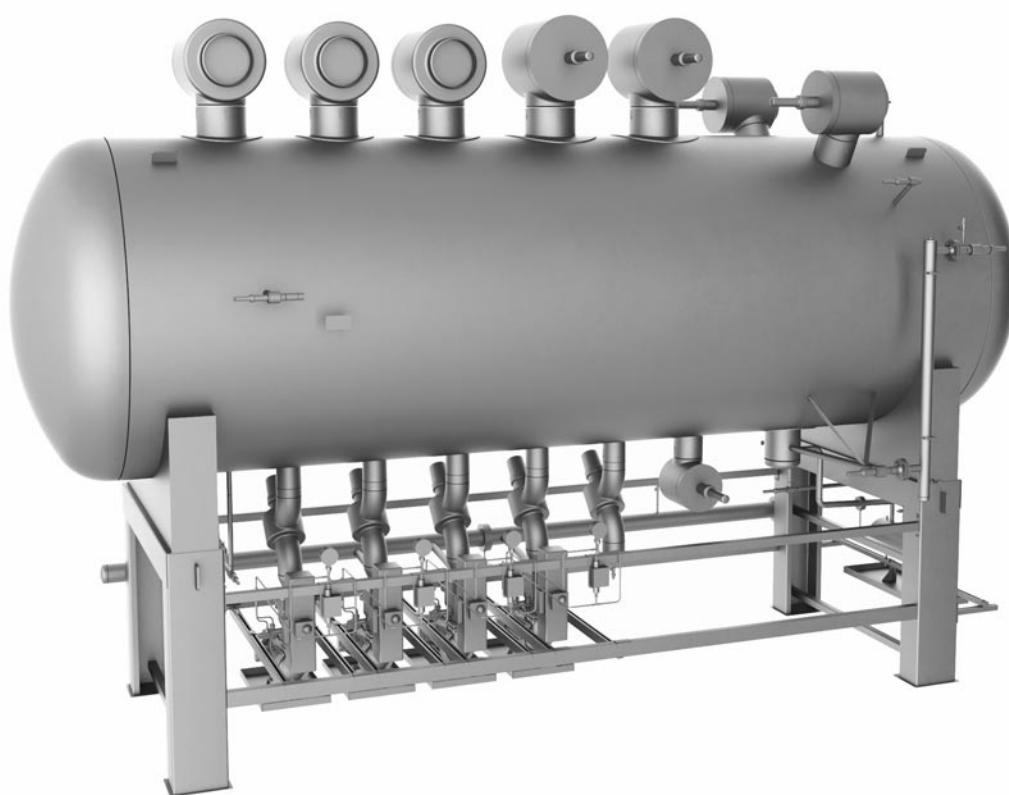


DB

## Pressure vessel unit



# DB

## Pressure vessel unit

**According to your individual requirements, practical designs engineered and build using our decades of experience.**



### Function and performance guarantee

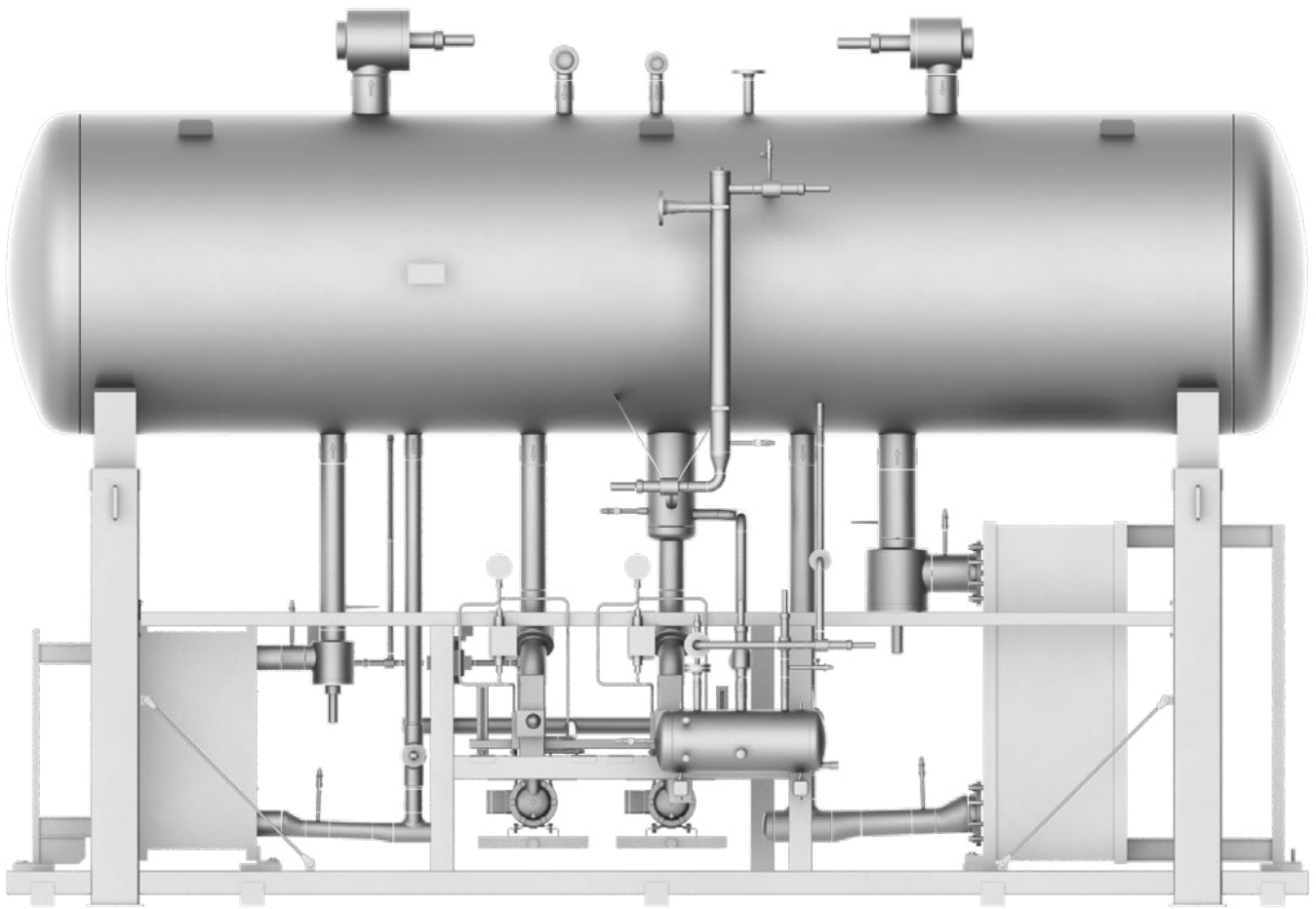
We offer you a full thermodynamic performance guarantee by taking your refrigeration data and applying our expertise.

### Easy projecting

We manufacture the entire pressure vessel unit using prefabricated components to European legal requirements. Each pressure vessel unit passes an acceptance test according to PED and is delivered with the necessary CE documentation: this includes required x-ray testing, pressure-testing and final acceptance check before delivery. You just need to connect your pipework and electrical services on site.

### All common refrigerants possible

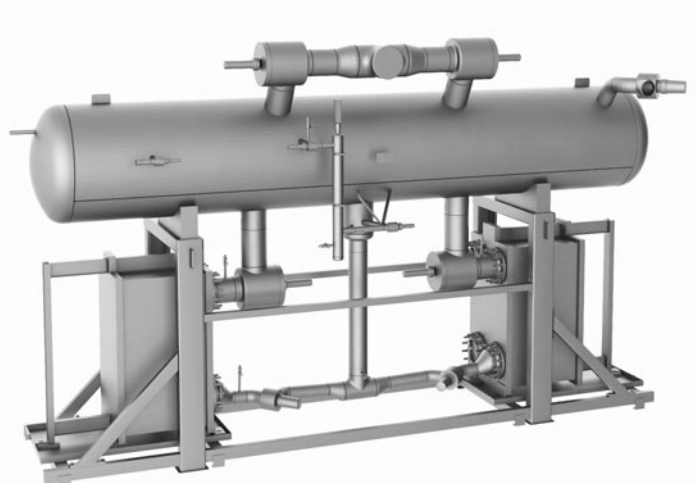
With our selection program we are not only taking care of ammonia and carbon dioxide, we can offer our well-designed pressure vessel units for any common refrigerant.



## Scope of supply

We can install nearly all components required for a pressure vessel unit and directly integrate further components:

- gasketed plate heat exchangers from Alfa Laval
- fully welded plate heat exchangers, i.e. Vahterus
- Standard WITT stainless steel standpipes
- WITT oil recovery system
- WITT maximum level switch NGX
- Shut-off valves and overflow valves, i.e. AWP
- electronic level indicators, i.e. RTK
- sophisticated pumping stations
- complete cascade systems
- pre-piped components
- complete insulation
- and much more!





## **TH. WITT Kältemaschinenfabrik GmbH**

Lukasstraße 32

52070 Aachen, Germany

+49 241 18208-0 | [sales@th-witt.com](mailto:sales@th-witt.com)