



made in Germany

SMART RELIABLE FLOW CONTROL SOLUTIONS



CONTROL VALVES



**SENSORS
ELECTRIC COMPONENTS**



**VALVES FOR SPECIAL
APPLICATIONS**



RTK is a leading specialist in the field of control valves for over 45+ years, RTK stands out as a reliable and innovative specialist, offering industry-leading solutions that enable businesses to optimize their processes, enhance safety, and achieve operational excellence.

RTK's control valves are engineered to meet the highest quality standards, ensuring optimal performance, durable and reliability in demanding industrial environments. The company's extensive portfolio includes a diverse range of valve types, such as Globe valves, 3-way valves, Actuators both Pneumatic and Electrical actuators, Regulators, Sensors and Digital controllers and more. These valves are available in different sizes, materials, allowing for customized solutions tailored to specific applications.

Utilizing advanced technologies and engineering expertise, RTK's control valves offer exceptional accuracy, responsiveness, and reliability. Our control valves are equipped with intelligent control mechanisms, allowing for precise regulation of flow rates, pressures, and temperatures. This level of control helps industries achieve optimal process efficiency, reduce energy consumption, and maintain consistent product quality.

RTK's control valves find applications across a wide range of industries, including oil and gas, petrochemical, power generation, renewables, Hydrogen eco-system and general process manufacturing. From controlling steam, gases, and liquids to handling corrosive and abrasive media, RTK's valves are designed to meet the diverse needs.

In addition to its high-quality products, RTK provides comprehensive support services to ensure customer satisfaction. This includes expert technical assistance, installation guidance, maintenance, and prompt after-sales support. RTK's commitment to customer service and its ability to deliver reliable control valve solutions have made it a trusted partner for industries around the world.



As a subsidiary of CIRCOR International Inc. RTK has the global market in view and is well positioned internationally. There is a reason why many industry standards come from Kornwestheim. We are ready and willing to take new paths in order to further develop our products to meet changing market and customer requirements.



WHAT CONTRIBUTES TO OUR SUCCESS?

At RTK, our success stems from several key factors. First and foremost, we place great value on ideas and suggestions from both our employees and customers. We take these inputs seriously and actively implement them into our processes, fostering a culture of collaboration and continuous improvement. Through regular internal workshops, we question and optimize our in-house processes, ensuring efficiency without external pressure.

Tradition

Our tradition of manufacturing reliable and durable products remains unwavering. While we embrace innovation and adaptability, our commitment to meeting high industry standards and delivering trouble-free operation never changes. We subject new products to extensive testing and scrutiny, benefitting from modern production facilities that grant us flexibility and control over quality.

Innovation

Innovation thrives at RTK, where good ideas are at the core of our advancements. From valve calculation programs to automated manufacturing processes and product configurators, our concepts often set industry standards and find their origins in Kornwestheim. We strive to provide products that have that special "something" to meet and exceed customer expectations.

Reliability

Reliability is ingrained in our well-trained workforce, enabling us to promptly respond to customer needs. By continually evaluating key performance indicators across departments, we can swiftly and effectively address unforeseen circumstances. We believe in keeping our promises to customers as a fundamental principle of our business.

Thoroughness

Thoroughness is a hallmark of RTK in every aspect of our operations. Our dedicated specialists in sales, Engineering, production planning, and purchasing meticulously engage with inquiries, ensuring that operating data is thoroughly tested and questioned. The result is a clear and comprehensive offer that our customers can confidently rely on.

Ultimately, our success is anchored in our unwavering commitment to delivering quality in everything we do. At RTK, we continuously strive for excellence to meet and exceed the expectations of our valued customers.

WE DELIVER QUALITY WITH GERMAN ENGINEERING!



RTK stands for innovation, quality and continuous product optimization. As all our products are assembled made to order it is easy for us to take into account your individual wishes. We can help during commissioning with our highly trained employees and attach great importance to on time delivery.



CONTROL VALVES WITH PNEUMATIC ACTUATOR

Pneumatic control valves for throttling, mixing and diverting of liquids, steam and gases in two-way and three way design

	DIN	ANSI
Nominal diameter	DN 15 ... 400	NPS 1/2 ... 12
Nominal pressure	PN 16 ... 160	CL 150 - 900

- DIN and ASME valve body materials
- Wide range of actuator forces
- Quick Change Seat for one and two stage Trims



CONTROL VALVES WITH ELECTRIC ACTUATOR

Electric control valves for throttling, mixing and diverting of liquids, steam and gases in two way and three way design

	DIN	ANSI
Nominal diameter	DN 15 ... 400	NPS 1/2 ... 12
Nominal pressure	PN 16 ... 160	CL 150 - 900

- DIN and ASME valve body materials
- Wide range of actuator forces
- Quick Change Seat for one and two stage Trims (QCS)



PRESSURE BALANCED CONTROL VALVES

Our RTK Pressure balance trim design allows / equips heavy duty control valves to manage high shutoff pressure while using compact actuators. The plug design incorporates pressure balancing holes, allowing the medium pressure to equalize on both sides of the plug. The resulting thrust is significantly reduced, allowing for smaller and less expensive actuators. Pressure balance trim is offered in one- and two-stage configurations

	DIN	ANSI
Nennweiten	DN 80...400	NPS 3...12
	*DN 300 bis PN 100	*NPS 12 bis Cl. 600
	*DN 400 bis PN 40	
Nennndruck	PN 16 ... 100	CL 150 ... 300

- Low-Noise Trim
- Seat injection
- Wide control range



FLOW-CONTROL SILENCER

Extension after Control Valves to reduce noise

	DIN	ANSI
Nominal diameter	DN 50 ... 250	NPS 2 ... 10
Nominal pressure	PN 40 ... 160	CL 300 ... 900

- End connection as per DIN or ANSI
- Upto four Throttles Plates
- Supplied ready to fit including the connecting elements



MOTORIZED VALVES WITH EMERGENCY CLOSING UNIT

Emergency closing device for motorized valves. Approved by TÜV as an actuator for water and steam with safety function in heating systems

	DIN	ANSI
Nominal diameter	DN 15 ... 250	NPS ½ ... 10
Nominal pressure	PN 16 ... 160	CL 150 ... 900

- Closes at power failure (fail to close)
- Adjustable closing time
- Automatic return to normal operation through integrated logic on restoration of power supply



REACT-PoP

Electric 3/6/10 kN Actuators for control valves with emergency power supply REpac03/ REpac06

	DIN	ANSI
Nominal diameter	DN 15 ... 250	NPS ½ ... 10
Nominal pressure	PN 16 ... 160	CL 150 ... 900

- Closes / opens at power failure
- Adjustable closing time
- Automatic return to normal operation through integrated logic on restoration of power supply



STEAM CONVERTING VALVES

Pressure reduction with simultaneous steam cooling by water injection

	DIN	ANSI
Nominal diameter	DN 40 ... 250	NPS 1 ½ ... 10
Nominal pressure	PN 16 ... 100	CL 150 ... 300

- Low noise Trim
- Water injection from below in most turbulent zone for effective atomization
- Wide control range with axial full cone nozzle and flow distributor downstream



MOTORIZED CONTROL VALVES WITH RECIRCULATION CONNECTION

Control valves for boiler feed-water control system, ensuring protection of boiler-feed pump when boiler demand falls below minimum pump rate

	DIN	ANSI
Nominal diameter	DN 25 ... 80	NPS 1 ... 3
Nominal pressure	PN 40	CL 300

- Protects the boiler pump against falling below the minimum flow rate
- Adjustable recirculation flow rate
- For boilers rated between 5 – 50 t/h



BOTTOM AND CONTINUOUS BLOW DOWN VALVES

Blow down valves for boiler application

	DIN	ANSI
Nominal pressure	DN 15 ... 65	PN 40
Nominal pressure	NPS 1 ... 2 ½	CL 300

- Maintenance-free spindle packing
- Clear flow through the valve
- Protection of the spindle packing by back sealing when the valve is open
- Two-way design with / without sample valve
- Hardened plug and seat for low wear operation
- Parabolic plug with linear characteristic for exact dosing of blow down flow rate



VALVES FOR DISCHARGE / RE-CIRCULATION CONTROL

Valves for discharge / re-circulation control used for water- or air-cooled condensers

	DIN
Nominal diameter:	DN 50...150
Nominal pressure:	PN 16...40

- Kvs value adjustable in port B - recirculation plug can be rotated upto 80°
- Vacuum-resistant on recirculation side
- Cavitation resistant recirculation plug



HYDROGEN

RTK control valves are designed for hydrogen applications using hydrogen-compatible materials and an appropriate sealing system to meet the various standards like ISO 15848, TA Luft and design construction with bellow seals to manage the highly flammable nature of hydrogen. Interaction with the metals causes progressive degradation when in contact with Hydrogen, hence Material selection is highly important and we at RTK comply to the existing directives (PED), codes, and standards (ASME, DIN, NACE) that address the issue of hydrogen embrittlement.

	DIN	ANSI
Nominal pressure	DN 15...150	NPS ½...NPS6
Nominal pressure	PN 16...160	CL 150...900

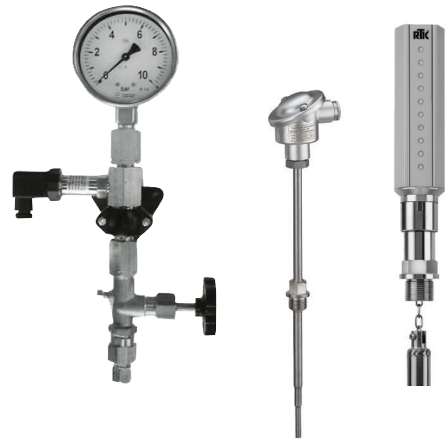
- Bellow seals and stuffing box packing as per TA-Luft / ISO 15858 for a leakage free operation.
- Construction material suitable for hydrogen service
- Wide range of Kvs values



SENSORS FOR PRESSURE, TEMPERATURE AND LEVEL

Resistance Thermometers PT 100 Level transducer for liquid, condensate vessels and steam boilers

- TÜV certified component
- Suitable for use in nuclear facilities
- Measuring range from 150 mm to 4000 mm



DIGITAL CONTROLLERS WITH PID CONTROL RE 3072/73 FREE CONFIGURABLE

Digital controller's configured ready for use

- PID characteristic
- Freely configurable inputs
- For installation in an electrical control cabinet



High performance in the smallest space

COMMISSIONING

- We help with commissioning our equipment
 - Support during commissioning of the entire system
 - Tuning of control circuits and control systems
 - Troubleshooting and error handling support
-

SPARE PARTS SUPPLY

System safety has the highest priority. That's why we manufacture reliable, long-lasting equipment. Never the less, if you do need a spare part, then of course you will find it available at short notice.

- Original spare parts
 - Same day dispatch of standard parts
 - Customised spare part kits for preventive maintenance
 - Expert advice
-

INSPECTION OF PLANT AND INVENTORY ANALYSIS

- We have a close look at your system
 - Recording of operating parameters and normal conditions of use
 - Realisation of your system-specific wishes and expectations
 - Draw up optimisation possibilities
 - Create a detailed plant report
-

REPAIR AND OVERHAUL

- On-site repairs are offered as standard
 - Repairs and creation of an in-factory quote
 - Complete functional test of all components
 - Renewed warranty on maintained units
 - We also repair other brands
 - Pick-up and drop-off service
-

TAKE ADVANTAGE OF OUR COMPLETE SAVE OFFER

REGULAR INSPECTION AND MAINTENANCE

- Review of the components according to predetermined specifications
- Maintenance and optimization of components
- Documentation of all work carried out

AND ALL AT A FIXED PRICE.



Service Solutions Worldwide

We service control valves and actuators in your plant to the highest quality standards. Enjoy first class service from our service team direct from the manufacturer.

Made in Germany

PLANT ENGINEERING AND CONSTRUCTION

RTK delivers quality. Made in Germany.

You know us as a specialist for control valves, but we have so much more to offer. More than 3000 colleagues are ready to help you worldwide. From ball cocks to turbine control stations, in our group

of companies we deal with high-quality valves for oil & gas, power station, industrial, and process applications. Take advantage of this unique situation and discover our world - the world of CIRCOR.

www.circor.com, www.circorenergy.com

- Power plant and renewable energy
 - Oil and gas
 - Paper manufacture
 - Timber plants
 - Plastics processing
 - Food and beverage
-

BOILER CONSTRUCTION

RTK has been a reliable and respected partner in boiler construction for over 40 years when it comes to high quality control and stop valves tailored to the boiler manufacturer requirements in conjunction with certain types of speciality valves. Over the years our extremely close relationships with customers, which are based on our understanding of their needs, have

resulted in solid, efficient and cost-reducing valve solutions for our customers in boiler construction. Ask our specialists, who will gladly help you choose the correct and cost-effective controllers.

RTK products can be found virtually anywhere in a boiler house.

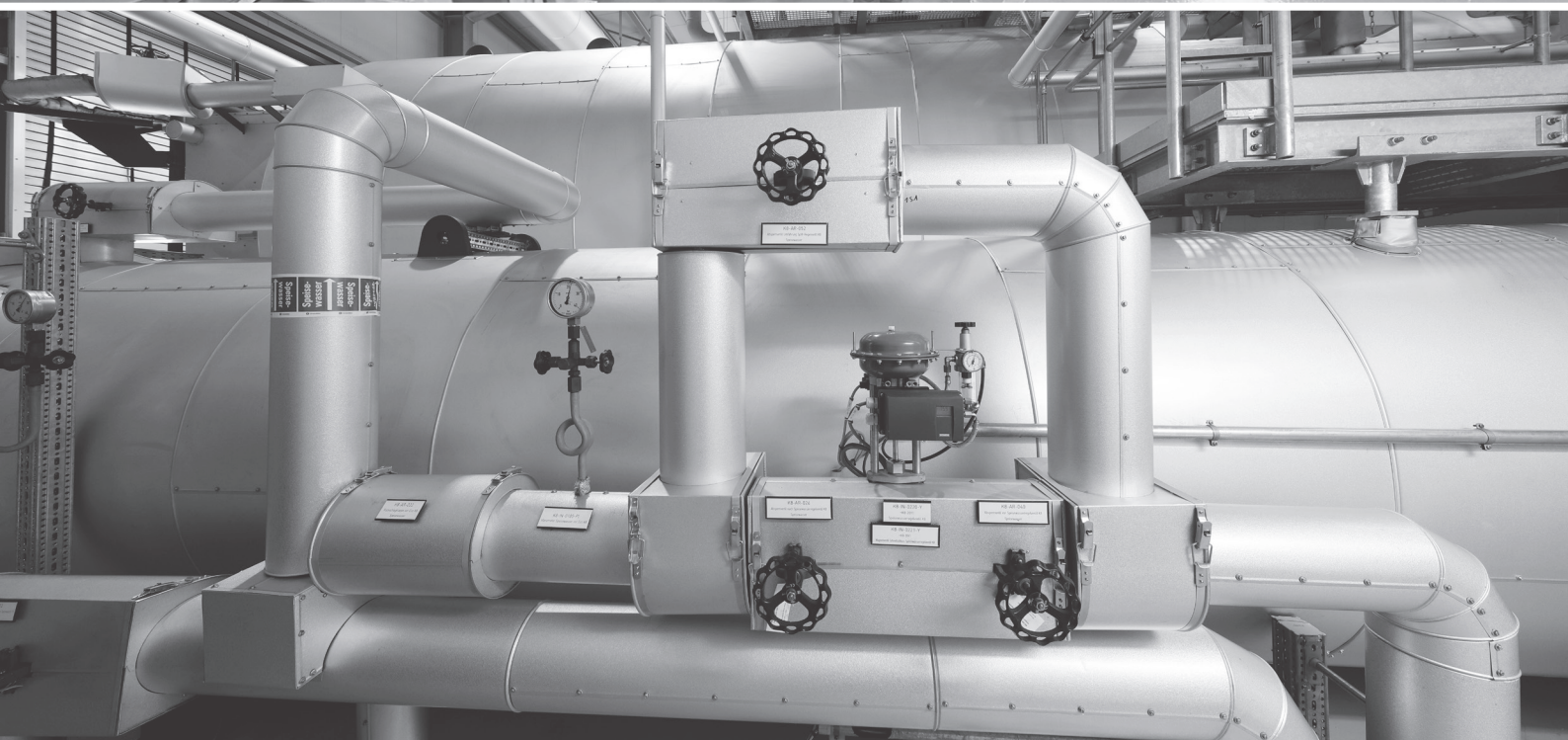
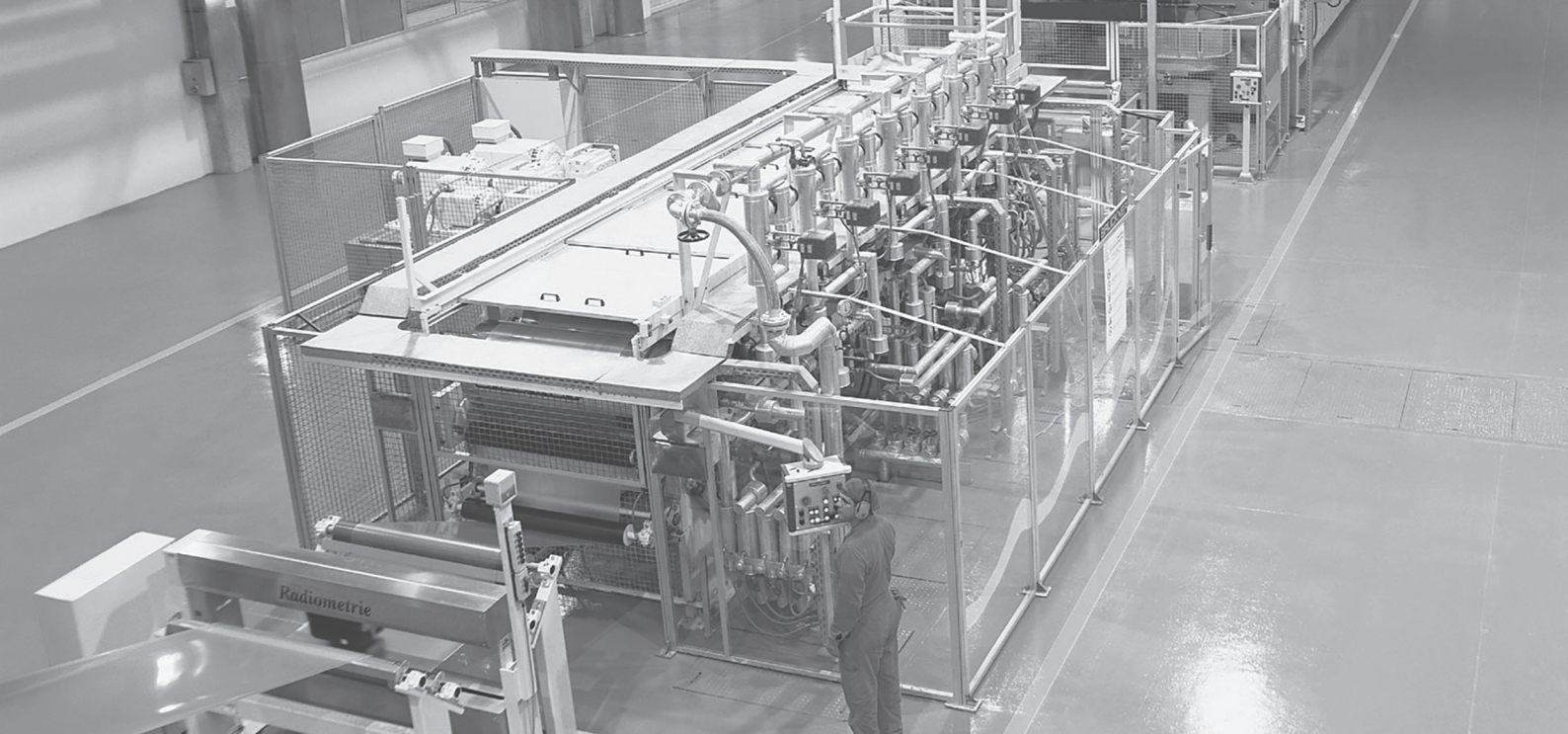
- Steam boilers
 - Hot water boilers
 - Thermal oil boilers
 - Feed water supply
 - Condensate treatment
 - Fuel supply
 - Ruths accumulators
 - Steam saturators
-

SHIPBUILDING

RTK has been a reliable and respected partner in shipbuilding for over 40 years. Over the years our extremely close relationships with customers, which are based on our understanding of their needs, have resulted in solid, efficient and cost-reducing valve solutions for our customers in shipbuilding. Ask our specialists, who will gladly help you choose the correct and cost-effective controllers. RTK products can be found virtually anywhere on a ship.

The complex, extremely compact systems are often quite similar depending on the type of vessel, e.g. cargo-, container-, fishing- and processing vessels, warship all the way to passenger ships, but some, though due to the purpose of the ship, are built very specifically for this. Just a few examples.

- Main Engine
- Auxiliary Boiler
- Thermal Oil Boiler
- Water Treatment
- Refrigeration System







Regeltechnik Kornwestheim GmbH

Max-Planck-Straße 3
70806 Kornwestheim / Germany

Telefon +49 7154 1314-0
Telefax +49 7154 1314-333
E-Mail: info@rtk.de

www.rtk.de / www.circor.com

